

TARTISAN RESOURCES CORP.

**Ichuña
Cu-Ag
Project,
*Peru***



April 2017

Forward Looking Statement

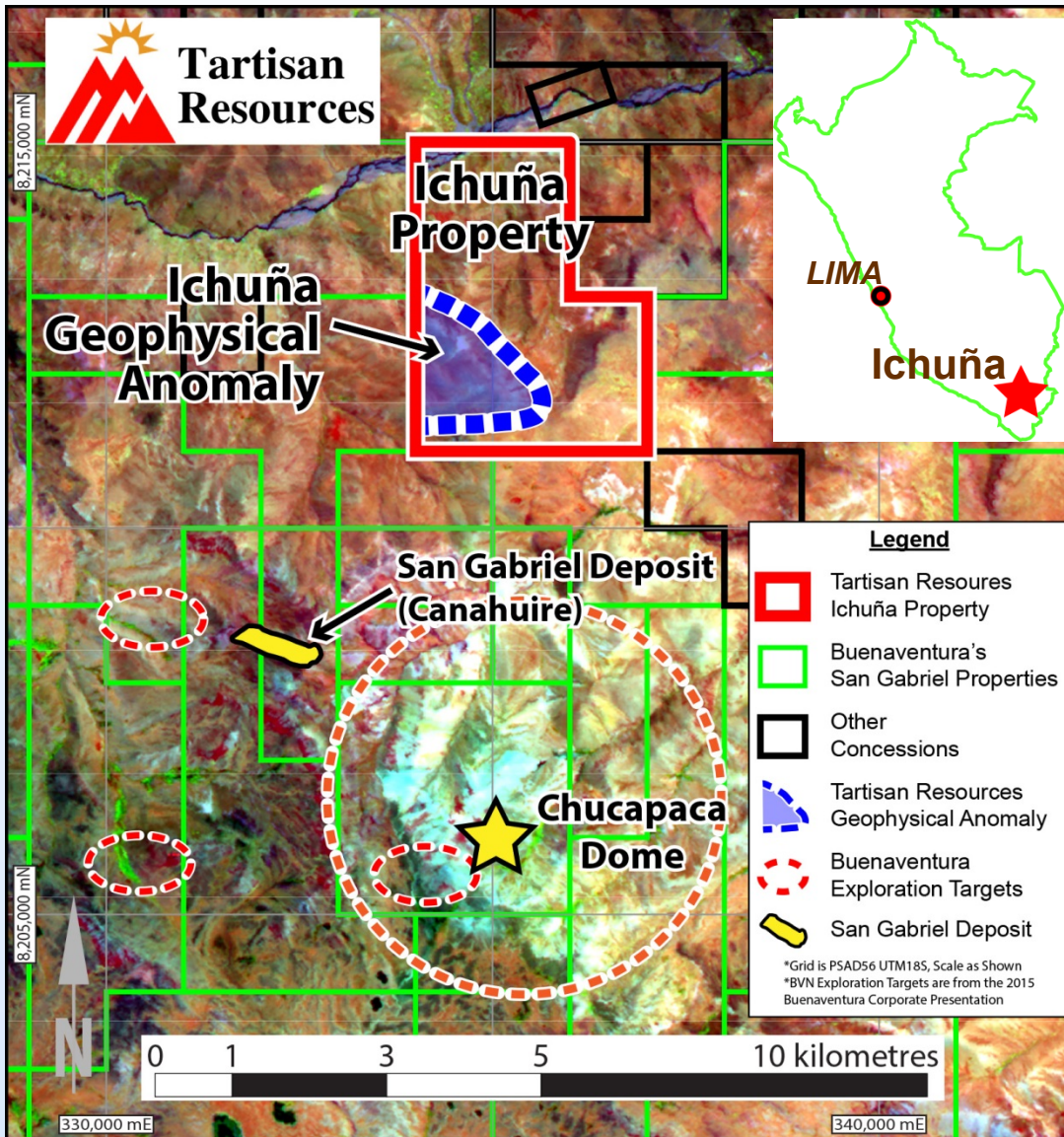


Certain information presented, including discussions of future plans and operations, contains forward-looking statements involving substantial known and unknown risks and uncertainties, many of which are beyond control of company management including but not limited to comments regarding the timing and content of upcoming work programs, geological interpretations, receipt of property titles, potential mineral recovery processes, etc. These may include, but are not limited to the influence of general economic conditions, industry conditions, fluctuations of commodity prices and foreign exchange rate conditions, prices, rates, environmental risk, industry competition, availability of qualified staff and management, stock market volatility, timely and cost effective access to sufficient working capital or financing from internal and external sources. Actual results, performance, or achievement may differ materially from those expressed or implied by these forward looking statements. We do not assume any obligation to update any forward-looking statements. As well, this presentation is not intended to be, and should not be construed as, a solicitation of expressions of interest in an investment in the securities of Tartisan.

The Company has not completed work supervised by a qualified person and may not complete the work to verify the results of historic exploration nor has a qualified person verified information for adjacent properties and that information is not necessarily indicative of the mineralization on the property that is the subject of this presentation.

Technical information in this presentation has been prepared and reviewed by Ryan Grywul, P.Geo, a non-Independent Qualified Person for the Company.

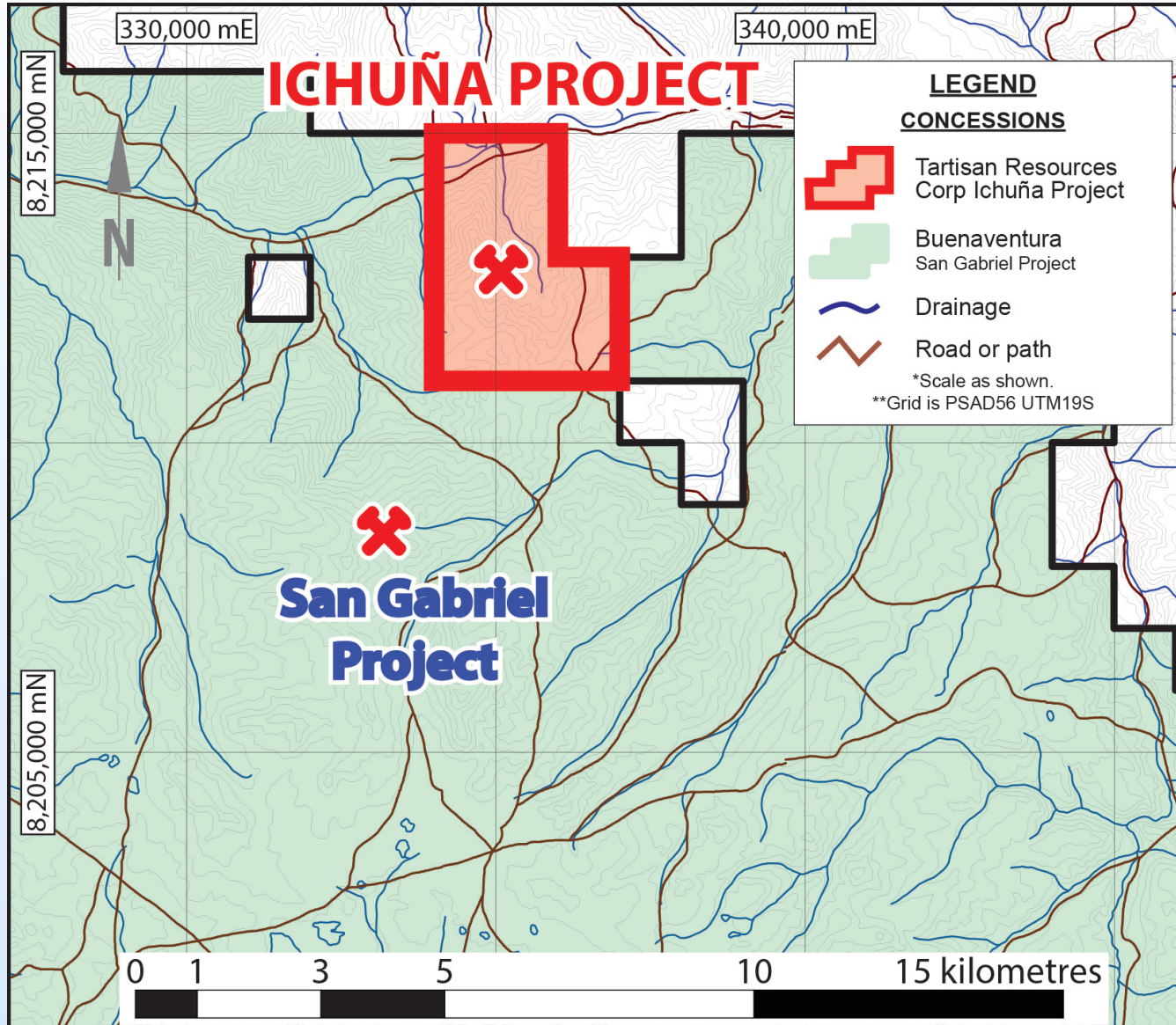
Ichuña Cu-Ag Project



- Located adjacent and less than 3 km from Buenaventura's San Gabriel (Canahuire) Deposit (2.5 million ounce gold: 50% Indicated-50% Inferred*) in Southern Peru
- A new emerging mineral camp: Buenaventura San Gabriel Blind Discovery Hole drilled in September 2008 – targeted IP anomaly
- At Ichuña, Rio Alto drilled 7 Holes
- Ichuña Main Geophysical Anomaly Never drilled
- Geophysics survey showing parallel structures the Canahuire Deposit
- Community Agreements can be renewed

* source <http://www.buenaventura.com>, 2016 Presentation

Ichuña Project - Well Positioned in a New Mineral District in Southern Peru

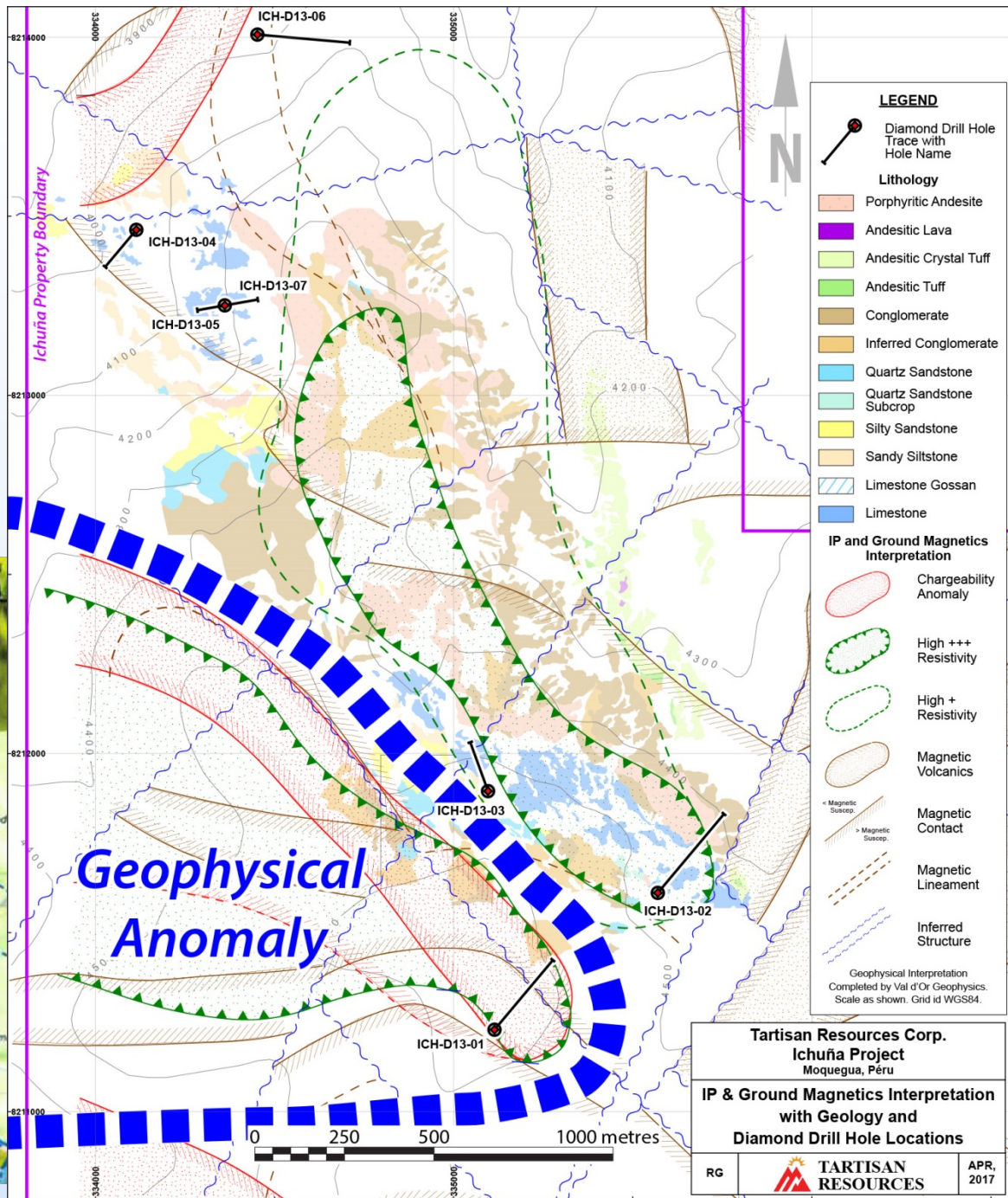
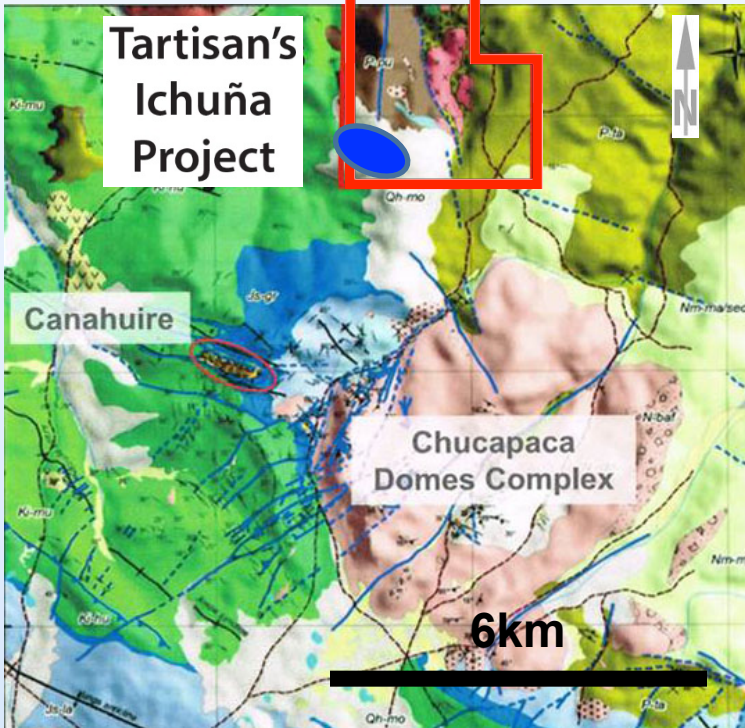




Tartisan Resources

Ichuña Project, District and Property Geology, Geophysical Anomaly

Tartisan's
Ichuña
Project





TARTISAN RESOURCES CORP.

Contact Us



D. Mark Appleby

President, Chief Executive Officer and
Director

Tel: +1 (416) 804-0280

mark@tartisanresources.com

Suite 1060, 44 Victoria Street,
Toronto, Ontario, Canada, M5C 1Y2

<http://tartisanresources.com>

info@tartisanresources.com

CSE:TTC

